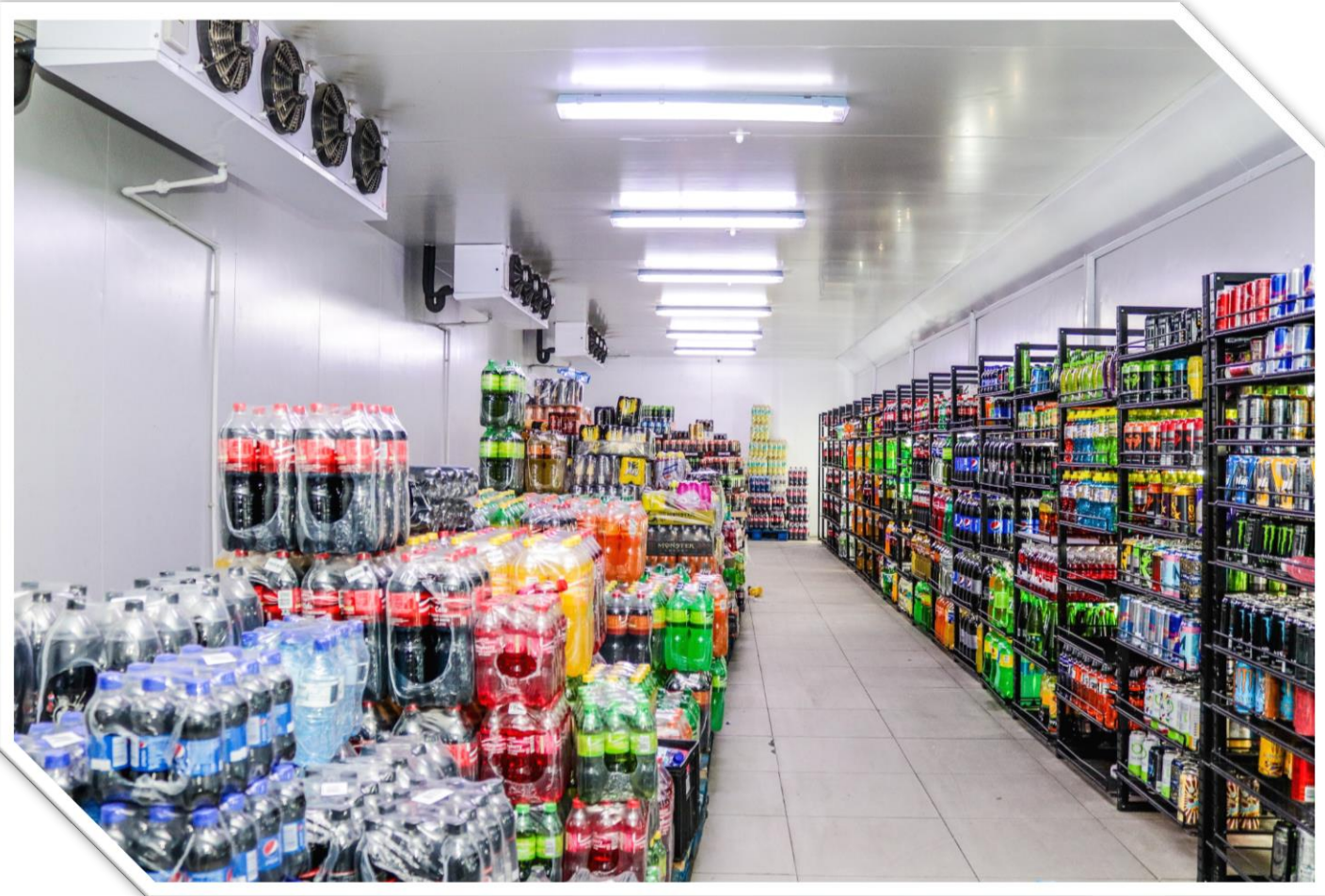




# Insulated Structures

*Efficiency At Work*

## POLYURETHANE PANELS



### Panel Specifications

- Standard Panels: Outer skin of brilliant white Chromadek, available in black
- Superior Polyurethane insulation injected for superior insulation and adhesion.
- High-impact PVC interlock profiles on all edges provides totally sealed insulation and a perfect vapour barrier
- Easily erected and dismantled
- Optional skin finish in Stainless Steel – Grades AISI 304 and AIS 403

### Floors – Fabricated and Concrete

#### Fabricated Floors

- The inside floor finish is 2mm Aluminium Treat Plate or 0.8mm Galvanised plate glued to a marine ply base

#### Concrete Floors

- Concrete floors are used for flush entry – no step up and in permanent structures. Usually a recess of 150 – 170mm is used to accommodate the foam slab insulation and the concrete screed

*Leaders in world class innovation for bespoke end to end energy efficient refrigeration solutions*



# Insulated Structures

*Efficiency At Work*

## AUTO GLASS DOORS



### Auto Doors

- Auto Glass Door – Customer display areas
- Glass Thermopanels made to order sizes

*Leaders in world class innovation for bespoke end to end energy efficient refrigeration solutions*





# Insulated Structures

*Efficiency At Work*

## MEAT RAILS



- |  |
|--|
| <ul style="list-style-type: none"><li>• Hot Dipped or Electro Plated Galvanised system</li></ul>                       |
| <ul style="list-style-type: none"><li>• Support structure integrated into insulated panels</li></ul>                   |
| <ul style="list-style-type: none"><li>• Optional free standing continuous galvanized system with switch gear</li></ul> |
| <ul style="list-style-type: none"><li>• Optional imported continuous aluminium system</li></ul>                        |

*Leaders in world class innovation for bespoke end to end energy efficient refrigeration solutions*



# Insulated Structures

*Efficiency At Work*

## BUMPER RAILS & GOAL POSTS



### Bumper Rails

- Galvanised or Stainless Steel pipe bumpers to protect cases, panels and glass doors
- Heavy duty galvanized steel angles for back of house areas
- Custom made Goal Posts to protect loading door frames

*Leaders in world class innovation for bespoke end to end energy efficient refrigeration solutions*



# Insulated Structures

*Efficiency At Work*

## ALUMINIUM CHEQUER PLATE



- Installed as an option to protect panels from scratches and light impact damage
- 1.6mm thick
- Standard 1.25m AFFL

*Leaders in world class innovation for bespoke end to end energy efficient refrigeration solutions*



# Insulated Structures

*Efficiency At Work*

## STRIP CURTAIN



- |   |
|---|
| <ul style="list-style-type: none"><li>• Ball edge to reduce tearing</li></ul>                                   |
| <ul style="list-style-type: none"><li>• Available in clear or translucent colours: Red, Black or Blue</li></ul> |
| <ul style="list-style-type: none"><li>• 200mm wide strips for light duty – pedestrians</li></ul>                |
| <ul style="list-style-type: none"><li>• 300mm wide strips for medium duty – pallet jacks</li></ul>              |
| <ul style="list-style-type: none"><li>• 400mm wide strips for heavy duty – fork lifts</li></ul>                 |

*Leaders in world class innovation for bespoke end to end energy efficient refrigeration solutions*